



# The SLO UU News

Newsletter of the Unitarian Universalist Fellowship of San Luis Obispo County

## An Urgent Plea from the UU Service Committee (UUSC)

UUSC and the Unitarian Universalist Association have launched a joint earthquake relief fund to help the survivors from the Jan 5 earthquake in Haiti. The U.N. estimates that 2.2 million people are affected and fears that the loss of life may reach into the tens of thousands. The destruction is widespread, with extensive damage to homes, hospitals, roads, water and sanitation services, and electrical and communication systems. An alarming number of buildings, including the National Palace and the United Nation's Headquarters, have collapsed.

Haiti is the Western Hemisphere's most impoverished and least-developed nation. For those hundreds of thousands of poor people in Port-au-Prince, the daily struggle for food, water, and medical attention already amounted to an emergency — the earthquake has made these challenges

infinitely more difficult to overcome, creating a humanitarian disaster on top of an existing humanitarian crisis.

### What UUSC will do

UUSC's disaster response in Haiti will focus on those survivors less likely to have access to aid, such as child domestic workers (restaviks), women-headed households that work in the informal sector, and people living with HIV/AIDS. Haiti has a vibrant grassroots movement with a vision of empowering people. UUSC will work closely with partners in this grassroots movement to reach those survivors at greatest risk of being overlooked. We've already connected with three organizations and will be reaching out to others over the next 24 hours in order to shape our response. We will be updating our website regularly as our plans develop. Finally, we are deeply saddened at the calamity that has devastated the lives of people in Haiti —Go to [www.uusc.org](http://www.uusc.org) to support our efforts to help them.

### WHAT'S INSIDE

Page	Stewardship Continued
2 Board of Trustee Column	7 Fundraising
2 Congregational Meeting Notice	7 Budget Time
3 Growth/Learning Circle	7 Worship Circle
3 RE View	7 Worship Associate
3 Mark your calendar	8 Social Responsibility Circle
4 Ethics Class	8 California Fair Elections
4 Pathway Circle	8 Transgender Knot
4 Need Help from Your Friends	9 Bulletin Board
4 Women's Discussion Group	9 Board of Trustees
5 Circle Suppers	9 Hospitality Note
5 In Case of Emergency	9 Holy Humor
5 Milburn Memorial	9 Endowment Fund
6 Stewardship Circle	10 Help Your Neighbor
6 Chamber Music	10/11 Build/not build Questions/Answers
6 Admin News	12 February Calendar

### WHERE, WHEN, AND WHO ON SUNDAYS

2074 Parker Street, San Luis Obispo, 93401  
 11 am Worship services, children's classes and care  
 Rev. Helen Carroll, Minister  
 David Robinson, Religious Educator and Administrator  
 Rebecca Sloan, Choir Director and Pianist

For more information, call the church office, (805) 544-1669 Monday-Friday, 9 am to 1 pm, or email [UUSLO@slonet.org](mailto:UUSLO@slonet.org).

**The SLO UU News** is published monthly by the Unitarian Universalist Fellowship of San Luis Obispo County, and is distributed by the Fellowship office to members, friends, and other UU churches. All inputs/inquiries should be sent to "[uuslo@slonet.org](mailto:uuslo@slonet.org)" with "Newsletter" in the subject line. Current and past issues of the *SLO UU News* are located on our website, [www.uufsloc.org](http://www.uufsloc.org). To subscribe to the online format, contact the office at [uuslo@slonet.org](mailto:uuslo@slonet.org).



**Board View by  
Eric Olsen,  
Board President**

"This Year We Made a Difference"  
I recently had the privilege to travel to a workshop in Tampa, Florida on "excellence in higher education." The premise of the workshop was that a formal, and regular practice of setting goals, planning, and measuring progress is the best way for a university or college to effect meaningful and significant change. This message was especially timely for our delegation of Cal State University representatives. Budgets are threatened, furloughs are in effect, and the citizens of California have every right to ask, "What are we getting for our money?" Being held accountable is a sobering circumstance.

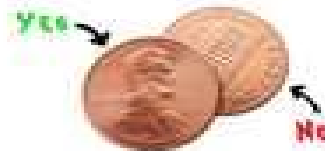
While the application to universities was the focus of the workshop, I found myself (during some of the less inspirational PowerPoint slides) thinking about how this applies to our Fellowship. Are we holding ourselves accountable to our mission and vision? Do we even know what our mission and vision are? It has been several years since we have made a concerted effort to plan for our future. Recently, it seems like we have been on hold waiting for the way forward on Edna to become clear.

I would argue that we need to hold ourselves accountable to our future while working through the present, and respecting the past. We have welcomed several new families and members since moving to Parker. The youth program is larger than it has been in years. I think it is time for us to reassess who we are and plan for who we want to be. A quote that brings home the challenge is that, "If you don't know where you are going, any road will get you there."

At this point, we are about half way through the church year. When we look back at 2009-2010 what will we say? Was this a year where we came together and got back on the right road? Was this a year when we started to "get it right"? What improvements were made in the way we deal with each other and the wider community? These are tough and worthy questions for any organization to consider. These are questions of accountability and measurement. I plan to challenge the Board to pick a few areas of focus to complete the year. It is my sincere desire that the Board and the Fellowship will be able to look back and say, "This year we made a difference. "

**Notice of Congregational Meeting  
Sunday, February 14, 2010  
12:30PM**

**EXECUTIVE DECISION  
MAKING SYSTEM**



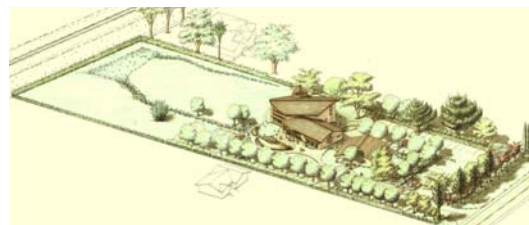
Agenda: Development at Edna – Discussion and Vote

Proposal for vote: Shall the congregation proceed with development at the Edna property, as described in the "Edna Update", dated January 31, 2010?

The "Edna Update" document with project description, budget and schedule will be available by January 31, 2010 via email and hard copy at the Board Corner.

**Project Description**

The site is a 2.75 acre parcel at 6445 Edna Road, owned by the UUFSLC. Development on the property will include a new sanctuary, fellowship hall, offices and Sunday school classrooms. The project is in two phases. *Phase 1* includes about 5,300 SF for the sanctuary and offices, converting the existing 1,600 SF residence to Sunday school classrooms, and providing 82 parking spaces. *Phase 1* includes \$100,000 for a right-hand deceleration lane or other traffic mitigation measures, if needed. *Phase 2* includes removing the residence and adding expanded office, meeting and classroom spaces for a combined total build-out of 11,000 SF and up to 137 parking spaces, paved and permeable overflow. The second phase would follow approximately 7 – 10 years later. (See pages 10 and 11 for detailed questions and answers regarding this decision.)





## Growth and Learning Circle

### Never an End to Learning



**The REview**  
by David Robinson, Religious Educator

February is Secret Pal month and it's not too late to join the FUN! But I need your signup form by Feb 5th, so contact me right away. For those who are new:

**Kid Pals** – every Sunday leave something special in your Pal's Bag – a poem, a picture, something about yourself so your adult Pal can get to know you better. **Adult Pals** – leave something special in your Pal's bag, including hints to your identity every Sunday. **Kid and Adult Pals** – Your Pal will be making lunch for you on February 28<sup>th</sup>, so be sure to leave your lunch preference slip in your Pal's Bag by February 15<sup>th</sup>. If you cannot be at church some Sunday, you can leave your stuff in RE and David and his helpers will make sure it gets into your Pal's Bag. **Parents** – Encourage your kids to spend a few moments every week creating something special for their Pal. Help them fill out the lunch slip. David or one of his helpers will let you know who your child's Adult Pal is (be sure not to accidentally reveal anything to your child, of course). If your kids are new to the Fellowship or younger than about 3<sup>rd</sup> grade, you may want to be in touch with the adult and discuss lunch arrangements for the 28<sup>th</sup>. Some families and Pals like to get together for a big picnic-style lunch with the Pal. Your call, but David is happy to help figure out what might work best for your child.

Neighboring Faiths planning continues and we should be able to start early next month. More details to follow. Thanks to all the parents for their work in helping get this started.

Owl for K-1 kids is also kicking off classes soon. Ly-Lan will be in touch with the schedule.

During February and March we'll be continuing our Toolbox of Faith curriculum. Don't forget to try out the *Taking It Home* activities and give

me your feedback on its usefulness (or lack thereof). If it works at helping you find ways to bring our classroom work into the "real" world I'll be working on similar items in the future. But I need your input first.

A reminder about snacks. Each family has been asked to supply snacks a couple of times during the year. Please remember a few simple guidelines: 1) Plan on about 25 kids. The number might be a lot less, but we don't want some kids being left without. 2) Avoid sweets / processed sugar items. We have plenty (ie TOO MUCH) of that available already. 3) Peanut allergies are common, so try to avoid anything with them as a "hidden" ingredient. Peanut butter sandwiches are fine because the peanut content is obvious and easy to avoid (but make sure there's an alternative available). 4) Fruit and something with a little protein (cheese?) are good ways to help stave off hunger. Don't hesitate to make small finger sandwiches. These can be good protein sources. Keep in mind we have some vegetarians. If you have any question about what's suitable, contact David.

Snacks ... enhanced? If anyone is interested in starting up a regular lunch group here at church on Sunday mornings, let me know. Instead of otter pops - bring your lunch, we'll find a place to spread out inside or possibly at a nearby park once the warm, dry weather kicks in. THEN otter pops. I know we're all busy and rushed these days, but maybe a few minutes on Sunday after church to be with other church families is actually a good time investment for your kids' futures.

#### **IN JOY**

David Robinson  
544-1669; uufslocdre@yahoo.com

#### **Mark Your Calendar:**

Secret Pal Exchanges – every Sunday this month

Secret Pals Revealed – February 28th

#### **February / March 2010 at Camp de Benneville Pines:**

Feb 5 – 7: UU winter Family Fun

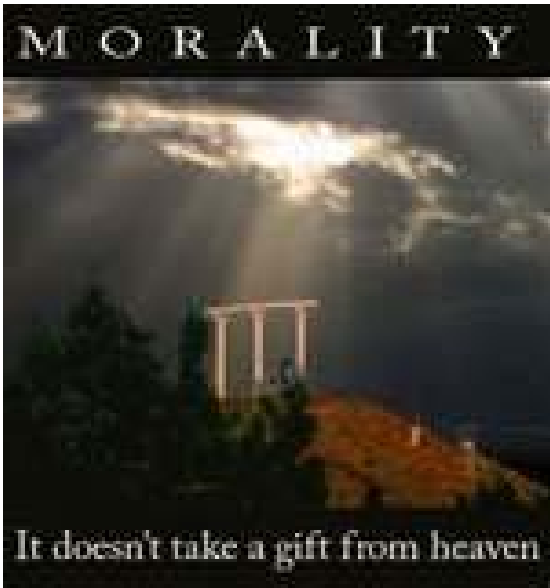
Feb 13 - 15: PSWD Elementary Winter Camp

March 26-28: Rainbow Family Camp

www.uucamp.org Email: uucamp@aol.com



**Growth & Learning Circle - Never an End to Learning**



**Ethics – An Exploration in Personal Morality**

In the comic strip “Crock,” the General complains to Crock, “Sir, I’m afraid the men are losing their moral ethics...they don’t seem to know right from wrong.” Crock replies, “That’s no problem. Right is what you can get away with...wrong is what you can’t.”

Hmmmm...Mark your calendar to attend *Ethics – An Exploration in Personal Morality*, led by Rev. Helen Carroll beginning in March. Our classes will begin at 6:30 each Wednesday evening and will consider the following:

- March 3: Authority – Can We Be Good Without God?
- March 10: Responsibility – The Difficult Art of Doing Good
- March 17: Situation – What is Going on Here Morally?
- March 31: Intention – Does the End Justify the Means?
- April 7: Relationships – In a Different Voice
- April 14: Values and Character – Is the Golden Rule Enough?

Interested? Have questions?? Contact Rev. Helen (459-9696 or [helencarroll@hotmail.com](mailto:helencarroll@hotmail.com))



**Pathways Circle - Our Ministries**



**Need a Little Help from Your Friends?**

Contact the Fellowship or a Regional Care Coordinator

If you or someone you know in the congregation is in the hospital or is recovering from illness, please contact the Fellowship. We'll organize support through our Regional Care Coordinators.

Thank you to our volunteers:

Avila, Grover Beach, Oceano, Pismo Beach, and Shell Beach:

**Jan Turney**

Arroyo Grande: **Trish Wilson**  
Atascadero, Templeton & Paso:

**Laurie Napoli & Joan Scott**

Cambria, Cayucos & Morro Bay:

**Kate and Terry Throop**

Los Osos: **Joy Gault**

San Luis Obispo: **Marianne Culver, Tom Norwood, and Bonnie Wamsley**

Santa Maria and Nipomo: **Chris Cummings**

Pathways Coordinator  
**Jan Clarke,**

**WOMEN'S DISCUSSION GROUP** meets on the second and fourth Thursdays most months. For information contact DeeDee De Santos at 534-9211. All women are welcomed.

February 11 meeting is at Eileen Pritchard's home 4350 Sunflower Way SLO Ann Williams will lead the discussion.

February 25 meeting is again at Eileen Pritchard's home at 4350 Sunflower Way Eileen will lead the discussion on The Art Instinct



## Pathways Circle Our Ministries of Support



### Circle Suppers

Sunday mornings are so short! We gather, worship, drink some coffee and then go our separate ways. Do you sometimes find yourself wishing you could have just a little more time with your fellow UU's? Well, guess what? You can. (And you don't even have to join a committee to do it!)

Our last round of Circle gatherings were well-received. People formed new connections and renewed old ones, ate good food and had some laughs. So...a new round of Circle Suppers is set to begin on the 3rd Saturday of the month for March, April and May. After sign ups are gathered, we will place you in groups of 8 to 10 people. Together with your group, you will hold potlucks once a month for 3 months. Don't feel like hosting? No problem! Just indicate your preferences on the form. In signing up you agree to attend regularly and participate fully. (People who can't attend regularly may sign up as substitutes and receive calls to join a group, sometimes at the last minute.)

The host/coordinators for each group will host at their homes, contact others to confirm they will be there before the scheduled date, coordinate food, and call for substitutes, if necessary. Host/ coordinators will provide drinks and the other guests will bring the main dish, vegetables, salads and desserts.

We'll do the organizing. Your job is to make a little food and have a lot of fun. Established and new members alike will find kindred spirits, and our circles will grow in number and in meaning.

Simply fill out the form by February 28<sup>th</sup> and mail it or e-mail it to Laurie Napoli. You will receive the names of the others in your circle, their addresses, phone#'s and e-mail addresses and the names of your host/coordinators for each gathering.

Fill out your form today, and may the Circles ever widen.

Circle Suppers  
3rd Saturday of the month for  
March, April and May  
Forms due by February 28<sup>th</sup> 2010

Name: \_\_\_\_\_

Ad-  
dress: \_\_\_\_\_

Phone#: \_\_\_\_\_

e-mail ad-  
dress: \_\_\_\_\_

Children's name if com-  
ing: \_\_\_\_\_

Adults only[ ] Intergenerational[ ] Substitute  
only[ ]

Dates you can Host Supper: 3/20[ ] 4/17[ ] or  
5/15[ ]

Mail to Laurie Napoli at 4815 Nogales Ave. Atas-  
cadero, Ca. 93422 or [e-mail information to](mailto:helencarroll@hotmail.com)

### In Case of Emergency

Did you know that there is a central file for holding emergency information for members of this community? We collect information such as copies of an Advanced Health Care Directive, a Living Will, contact information for next of kin, and other end of life information. Consider sending that information to Rev. Helen as one of the steps in your emergency planning. If you have any questions or concerns, please call or e-mail. (459-9696 or [helencarroll@hotmail.com](mailto:helencarroll@hotmail.com))

In Celebration of the Life of Tom Milburn  
Join us on Saturday, February 6 at  
10:00 a.m. for a Celebration of the Life  
of Tom Milburn



## Stewardship Circle Care for Today and for Tomorrow



### Chamber Music at the Fellowship Just Duet

Double your afternoon pleasure as **Mary Sue Gee**, soprano and **Judith Dunlore**, mezzo-soprano, explore composers who have made beautiful contributions for this voicing.

**2:00 p.m. Sunday Feb. 21** at the UU Fellowship  
Donation \$15, students \$5, children 12 & under free

#### 2010 Chamber Music at the Fellowship Season

March 28: Chamber Groups of the SLO Youth Symphony

May 23: Terrence Spiller, piano

### Administration News

THANKS to all the volunteers who keep the office running every week on Thursday (**Andrea Brown**) and Friday (**Rob Hunt**) and during my vacations. Vacation occurred the last week in January, so please be patient while I play catch-up during the first week of February.

Welcome to **my.UUA.org!** The UUA has launched a new system that has GREATLY assisted your administrator in keeping our congregation information up to date with the UUA (one of those behind-the-scenes things that took up a LOT of time and was very error-prone). But now the system is open up to everyone and there are a lot of reasons to check it out. It's a bit cumbersome to find, but bear with me and give it a shot. Go

to the UUA website ([www.uua.org](http://www.uua.org)). Click on the section titled "Leaders". Then on the left hand side of the page click on "Data Services"; then click on "FAQ"; then "my.UUA.org Accounts". (I know – a pain, but they have been asked to supply a direct link from the "Members" page to make it easier.)

Why go through the hassle? Well, it only takes about 5 minutes to create an account once you get through the maze I've outlined above. The benefits: 1) For your administrator who spends an entire work week (spread out over the year) to keep the data up to date it would cut that time by at least two thirds because YOU take charge of keeping YOUR information up to date. 2) YOU get to decide what information the UUA has about you. Their privacy policy is very strict and none of their info gets released to third parties – but there are people who want to control *for themselves* what information is available. 3) Upcoming features on the my.UUA.org system include access to a member directory if we decide to activate that option (more on that in future Newsletters). 4) An integrated and accurate database will help keep communication between you and your parent organization flowing smoothly and prevent duplicate (or missing) mailings.

Have you checked your Fellowship mailbox lately? Every group / committee should have a mailbox, color coded and arranged by Circle. If your group needs a mailbox, contact your Circle Coordinator (look for the colored charts with interconnected circles on the wall above the mailboxes). Who are the Coordinators? Worship Circle: **Sandra Kulczyk**. Pathways Circle: **Jan Clarke**. Growth and Learning Circle: **Kate Throop**. Social Responsibility Circle: **Renee Besel**. Stewardship Circle: **Orval Osborne**. Mid year budget statements came out in early January. If your group has a line item for income or expense in the budget, please be sure to check your mailbox for this statement and let me know if you have any questions about it or feel there might be an error. This is an important role YOU can take to make sure our accounting practices are adequate, safe, and accurate.

And speaking of forms – do you know what the *UUFSLOC Fundraiser Collection Report* is? It's the form you need to complete BEFORE you turn in any money raised from Connection Events or Rummage Sales or other fundraisers. The form can be found above the mailboxes in the Office; in the Stewardship box in the Community Room; and is available



## Stewardship Circle Care for Today and for Tomorrow

a recurring fundraiser) from the Administrator. This one is IMPORTANT folks. The Treasury Teams work really hard on your behalf handling the money on Sunday morning. They need your help on this one. PLEASE do not hand any money to them, or put money in the Administrator's box, without the properly completed paperwork. It's about safety, **respect**, and plain old good accounting practices. Please contact me if you have any questions.

We have been having a sporadic problem with emails disappearing from our InBox. Our ISP and our email provider are attempting to track down the problem – but there are a few simple things YOU can do to make sure the information you *sent* to the Office actually *arrives* at the Office.

First, make sure your email is clearly labeled for *News and Notes* or *Newsletter* in the Subject line if that's where you want it to go. Second, every email sent to the Office will get a response of some kind. I, or the *Newsletter* or *News and Notes* Editor (Rob Hunt) will let you know we received your mail. If you do NOT get a response within a reasonable period of time (keeping in mind the Administrator works Mon, Tue, Wed; and Rob generally staffs the Office on Friday), send your email again. This is especially important for Newsletter articles sent near the deadline if you want to assure their publication. If you have a question about receipt of an email, you can always call the office (open from 9am to 1pm Mon – Fri) to check.

THANKS

David Robinson, Administrator

Office Hours: Monday – Wednesday, 9am to 1pm

The Office is staffed by volunteers Thursday & Friday from 9am – 1pm 544-1669; uuslo@slonet.org

### Fundraising and YoUU

This year we committed to raising \$44,510 through Goods and Services Sales, Event and Program Income and Connection Events. These are opportunities to have fun together and to raise money for our operating budget. Our generosity and our financial commitments are a part of the life and work of the Fellowship.

And we need your creative, enthusiastic involvement! If you have an idea for fundraising, share it. If you have time to work on a project, volunteer. If you are looking for entertainment, try us. Questions? Ideas? Contact Orval Osborne, Circle Coordinator for the Stewardship Circle.



You can run, but you can't hide.  
Money needs attention!

**It's That Time Again.** Well – almost that time again. Time to draft next year's budget. If you have a program to offer, activity to plan or general interest and support for the financial life of the congregation, mark your calendar for March 2, 16, 30, and April 6. We'll be meeting to decide what to propose to the Board and to the general membership for the 2009-2010 Program Budget.



### Worship Circle At the Center of Our Spiritual Life



#### Opportunity is knocking.

Would you like to be a worship associate for one of the morning services? If you like public speaking, serving this community or just want to learn more about our worship services, consider volunteering to be a Worship Associate.

Are you a little nervous about standing at the pulpit on Sunday mornings? I'll be glad to work with you to reach a comfort level. Please contact Rev. Helen to volunteer. And thank you for considering the possibility. ([helencarroll@hotmail.com](mailto:helencarroll@hotmail.com))



## Social Responsibility Circle Inspired by Faith, Committed to Action



### LEGISLATIVE MINISTRY

#### California Fair Elections Campaign

Are you happy with the current government process of elections? Do you think some politicians are bought? Well plenty of folks are not satisfied and agree that we need a change.

Voters want our elected leaders to focus on finding solutions to our problems-not on spending time raising money for their next campaigns. And big money buys influence. Special interest money corrupts our political process and our democracy. Most recently this has been demonstrated with the struggles over health care reform. The influence of money reduces the diversity of people who can run for office, communities are under represented in Sacramento, and good candidates are not able to compete with big money interests. Voters are often unhappy with the choices of candidates on the ballot. After elections, campaign contributors expect results and access for their money; "...money creates more access to democracy which leads to more injustices." Rev. Gilbert, (Montana UU minister)

The California Fair Elections Act (CFEA) seeks to change this with fundamental election reform. It will allow candidates and elected officials to get out of the money game and allow more women and candidates of diverse backgrounds to run for office. A measure asking voters to establish a voluntary pilot project for California Secretary of State races in 2014 and 2018 will appear on the June 2010 ballot. This measure (Assembly Bill 583) has been approved by both the State Assembly and the Senate and signed by Governor Schwarzenegger. The pilot project will make available public support grants to candidates who agree to limit spending and private fundraising in their election campaigns. Because the Secretary of state is responsible for overseeing and regulating the state's lobbying activity and the integrity of our elections, CFEA will

assure voters that the Secretary of State is focusing on their duties and not worrying about raising campaign contributions.

Successful election reforms already exist in seven states and two cities. California can have this too. Want more information? In March our congregation will have a speaker from the UU Legislative Ministry California Fair Elections Campaign who will provide more details on the CFEA and tell us how UUs can get involved. Priscilla Akin UU Legislative Ministry Rep

### **.Evening of Education and Enlightenment: Transgender Couples Speak Out**

Ever wondered what it might be like to be happily married and then find out your husband or wife was miserable in his/her life as a man or woman? What happens when a married heterosexual couple "becomes" a gay couple, or vice-versa? What are the social, legal and emotional effects on the family as they adapt to such a radical change?

These are some of the issues we will be exploring on February 6, 2010 at the Unitarian Universalist Fellowship, 2074 Parker St., SLO at 4:30 PM. The evening will start with a potluck dinner at 5:00 PM, followed by a viewing of the film, *Normal*, with Jessica Lange and Tom Wilkinson, at 6:00 PM. After the film, a panel of two transgender couples, along with Dr. Denise Taylor, a local physician treating many transgender individuals, will address some of the many issues affecting transgender couples.

The Unitarian Universalist Fellowship's Social Justice Committee is sponsoring the program, and Tranz Central Coast members are presenting it. Tranz Central Coast is a local gender support group whose mission is dedicated to being a comprehensive resource for transgender services, support and advocacy for residents of California's Central Coast. We are joining together to present this interesting and important program to help people understand the challenges transgender couples face as they work to maintain their relationship through a process of radical change.

Please join us for this evening of enlightenment and education. Bring a potluck dish to share and *your own place setting and utensils*. Drinks will be provided. An offering will be taken to offset the cost of showing the movie. Contact Gina Whitaker ([gwhitaker@ginanken.com](mailto:gwhitaker@ginanken.com)) or Kari Graton ([kari graton@yahoo.com](mailto:kari graton@yahoo.com)) for further info. 10

## FELLOWSHIP BULLETIN BOARD

### BOARD OF TRUSTEES

2009-2010

President - **Eric Olsen**

Vice President - **Andy Pease**

Corporate Secretary - **Kate Throop**

At large: **Richard Besel, Mary Jeanne Bonaventure,  
Andrea Brown, Chris Cummings, Joyce Knight &  
Kate Throop**

Appointed Treasurer: **Terry Throop**  
Recording Secretary - **Sylvia Willard**

### Just in case,

I'll be taking the last two weeks of February as vacation. If anything comes up, contact David Robinson, our office administrator, and he'll know how to reach me. Rev. Helen

### Hospitality notes:

It is becoming critical that more people step up to do the coffee making and cleanup on Sunday mornings. One of our 3 current makers, Rosemary Lucier, can only work a specific few times so that leaves Eve Jeys and me filling in all the rest. JoAnne Milburn will try doing the job paired with one of us starting mid-February. It would be wonderful if several others would try our the job pairing with Eve or me to see how your participation could help the Fellowship. Please let me know if you are willing to give it a try.

Meredith Whitaker 594-1133 [rmwhit@charter.net](mailto:rmwhit@charter.net)

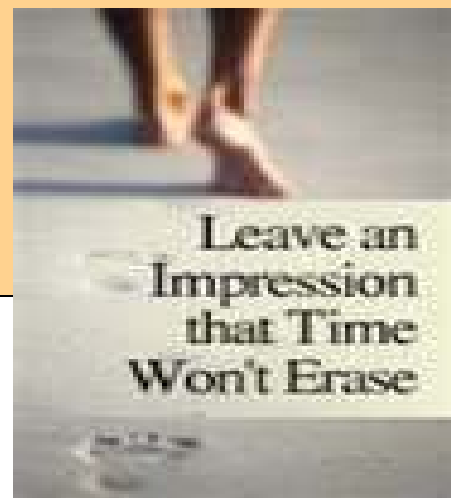


Good news! After hundreds of years of ministers, a model of perfection has been found – one who will please every member.

She is twenty-six years old and has been preaching for thirty years. She is tall, short, thin, heavyset, handsome, pretty and has one brown eye and one blue eye. Her hair is parted in the middle (blonde), left side (dark and straight), and on the right side (brown and wavy).

She has a burning desire to work with teenagers and spends all her time with older folks. She smiles all the time with a straight face because she has a sense of humor that keeps her seriously dedicated to her work.

She makes fifteen calls a day on church members, spends all her time evangelizing for the UUism, and never leaves her office!



### Endowment Fund Of the Unitarian Universalist Fellowship of San Luis Obispo County:

A permanent fund maintained for the financial health and long-term needs of this Fellowship.

Gifts of all types are received, invested, and maintained by the Endowment Fund Committee as directed by the Fellowship Bylaws. The Committee receives bequests, trusts, annuities, life insurance, and special donations at any time. An explanatory brochure is available in the Social Hall. Members of the committee are elected by the congregation. They are available at your convenience to discuss your wishes and answer any questions. To make a financial donation to the Fund, make out your check to: "UUFSLCo Endowment Fund".

Committee members are John Bonaventure, June Minikel, Joe St. Clair, Diana Schmitt, and Kent Taylor



1. We are looking for one or more volunteers. The Maxine Lewis Memorial Homeless Shelter and the Prado Day Center for the Homeless are constantly in need of towels (not new ones, just with a little life left) for the folks who shower both places. Also, they can use sleeping bags, backpacks and warm jackets (they have plenty of other types of clothing). Travel size, well-sealed toiletries are always welcome. We will have a large, clearly marked box outside each Sunday. The volunteer(s) would be responsible for putting it out and taking it in. When it's full a volunteer would deliver it to the Prado Day Center. There are so many generous people within our Fellowship that I'm sure we could fill this box often. We can start this as soon as we have one or more people to help. Please call Sylvia Willard at 546-8718 [swillard@charter.net](mailto:swillard@charter.net).

2. The Prado Day Center is now being kept open 24 hours a day when rain or extremely cold weather is predicted for two days or more consecutively. Volunteers are needed for shifts from 4:30p.m. to 12:00a.m. and from 12:00a.m. to 7:00a.m. to stay with our neighbors who use this service. As secretary to the Interfaith Coalition for the Homeless (ICH) I am compiling a list of people who can serve in this capacity. Please call Sylvia Willard at 546-8718 [swillard@charter.net](mailto:swillard@charter.net).



**To Build or Not to Build – My What a Question!**

At the meeting on February 14, the congregation will formally vote on the questions: Shall the congregation proceed with development at the Edna property, as described in the "Edna Update," dated January 31, 2010?

In preparation for that vote we asked the congregation to let us know what questions needed to be addressed. The following are the questions received by mid-January when the Newsletter was put together. Many thanks to the Long-Term Home Committee members for their diligent work. (That committee is composed of Andy Pease, Jim Culver, Ann Bernhardt, Eric Olsen and Rev. Helen Carroll)

**CHANGES FROM PREVIOUSLY PUBLISHED INFORMATION IN COPPERPLATE GOTHIC BOLD TEXT.**

**About the costs**

- 1. What is the cost to finish construction for Edna, phase 1? **\$1,780,000**
- 2. How much is in the Capital Campaign Fund currently? **\$ 680,255**
- 3. What is the expected amount of the mortgage? **\$ 500,000**
- 4. What is the expected amount of the Gap Capital Campaign? **\$ 600,000**

(Note: these figures are based on mid-January 2010 analysis.)

**About a Gap Capital Campaign**

1. What is the process whereby the decision to retain/not retain a Capital Campaign consultant will be made?

Wayne Clark , Director of Congregational Stewardship Services for the UUA, advises that we use a Capital Campaign Consultant to determine the financial feasibility for a Gap Capital Campaign. The cost to us would be approximately \$20,000, based on how much the consultant can accomplish by phone and how much in person.

2. If a Capital Campaign consultant is retained, how will the Congregational representatives that work with the consultant be determined/selected? The process for identifying congregational representatives has not been addressed.

3. The first capital campaign covered 3 years, how long will the Gap campaign extend?

The Gap Campaign will cover one year from pledge to payment. (See the timing section that follows)

4. Will the Gap capital campaign be for a "New Home" or for "Edna?"

The Gap Campaign will be for "Edna".

5. What happens if we don't raise the necessary amount for the Gap Capital Campaign?

If we cannot raise **\$600,000** in the Gap Capital Campaign, the congregation will need to decide what to do next. Some options will include: Revising the architectural/construction plans and building a different version on the Edna site; Conducting a commercial real estate search for a different site; Putting the project on hold until we are able to raise additional funds.

**6. DOES THE \$600,000 FOR THE GAP CAPITAL CAMPAIGN INCLUDE A DEFAULT FACTOR? No.**

**About the timing**

The Project Schedule is as follows  
 March 1, 2010 Initiate Environmental Impact Report (EIR) (12 months)

January 1, 2011 Conduct Gap Capital Campaign (2 months)

February 1, 2011 Complete EIR; submit to Planning Commission (3 months)

May 1, 2011 Planning Commission approval; complete Construction Drawings (3 months)

August 1, 2011 Submit for building permit (3 months)

November 1, 2011 Receive building permit; Start construction (8 months)

July 1, 2012 Construction complete; move in

1. What is the schedule for the needed funding activities

- construction loan

Complete loan application June 1, 2011

Loan review June 15, 2011

Loan Approval August 2011

Close Loan January 15, 2012

- mortgage loan

The construction loan converts to a mortgage loan at the completion of the project

- capital campaign

Consultant analysis Oct – November **2010**

Leadership Gift Kick-Off December 2010

General Campaign January – February 2011

Pledges received Jan 2011 – January 2012

2. Will expenditure of any significant funds for Edna be forestalled until all funding needs/sources/commitments are guaranteed? No. The EIR will be funded out of the monies in the capital campaign fund. We anticipate approximately \$140,000 dollars will be needed to pay for the EIR and currently there are \$680,255 in the Capital Campaign Fund.

**About a mortgage**

1. Can we get a mortgage loan through the UUA?

From initial conversations with Wayne Clark, Director of Congregational Stewardship Services for the UUA, there are no apparent reasons why we might not qualify for a \$500,000 loan with the UUA. Remember, we have no guarantee until application is made and a financial assessment is conducted.

Details on the Building Loan Program are available from the UUA web site at [www.uua.org/leaders/leaderslibrary/buildingloans](http://www.uua.org/leaders/leaderslibrary/buildingloans)

2. Assuming we are not able to get all the financing we need through the UUA, can we obtain the opinion of a lending institution on how much we might reasonably expect to get financed through a commercial institution?

We have not explored other financial institutions to determine whether we will be able to obtain financing through a commercial lender.

**About becoming a Fair Share Congregation**

1. What is the total amount needed for us to be a "Fair Share" congregation?

To be qualify for a UUA loan, we must be a Fair Share congregation and we must maintain our Fair Share status for the duration of that loan. For 2010 -2011 we believe the per member cost will be \$58. So Fair Share for us will be \$12,644.

2. Is a decision to fund "Fair Share" by default, a decision not to restore our staff to "full time?"

A decision to fund Fair Share is NOT a default decision not to restore our staff to "full time." Staffing levels are determined by our program needs and our financial resources. Come to the budget meetings in March to have input on the staffing levels.

3. If not, what will it take to restore the staff to previous hours and compensation levels, adjusted for inflation?

To restore staff to previous hours and compensation levels will take \$67,197.50 above the current budget level.

**About the vote to approve**

1. From where did the figure of 67% approval needed to decide on a new home come?

The original approval level recommended was taken from the by-laws level necessary to approve a budget.

2. Does the UUA have any recommend guidelines on the percentage of the congregation needing to vote in favor of a new home/construction decision?

In conversation with Ken Brown, District Executive for the PSWD, and Wayne Clark, Director of Congregational Stewardship Services for the UUA, we are reconsidering that approval level. Since the decision to move forward is on a par with calling a minister, both Ken and Wayne reminded that the approval level needs to be at least 85% and prefer a 90% approval. **At their monthly meeting on Jan 19, the Board approved 85%.**

**UNITARIAN UNIVERSALIST  
FELLOWSHIP  
OF SAN LUIS OBISPO COUNTY**  
2074 Parker Street, Ste. 100  
San Luis Obispo, CA 93401

## February 2010

Sunday	Monday	Tuesday	Wednesday	Thursday	Friday	Saturday
	1 9:45a Music Committee - CR	2 6:00p Worship Arts - Classroom 7:00p Lit Wits - Sanctuary 7:00p Men's Group - Off	3 12:00a N&N Deadline 7:00p A Chosen Faith	4 6:30p Choir Rehearsal - Sanct	5	6 10:00a Milburn Memorial 4:30p Transgender Couples Speak Out
7 9:45a Choir Rehearsal 11:00a Worship and RE 12:30p Social Justice - Class 12:30p Art Show Hanging	8	9 6:00p Board of Trustees - Sanctuary	10 12:00a N&N Deadline 2:00p Membership - CR 4:00p RE Committee 6:30p UFETA - Classroom 7:00p A Chosen Faith	11 1:30p Women's Disc - Sanct 6:30p Choir Rehearsal - Sanct	12 12:30p Single Again - CR	13
14 9:45a Choir Rehearsal 11:00a Worship and RE 12:30p Congregation Meeting	15 12:00p Newsletter Deadline	16 7:00p Men's Group - Off	17 12:00a N&N Deadline 7:00p A Chosen Faith	18 6:30p Choir Rehearsal - Sanct	19	20
21 9:45a Choir Rehearsal 9:45a Cafe Socrates - Classroom 11:00a Worship and RE 2:00p Concert	22	23 6:00p Ladies of the Eve - Sanctuary/CR	24 12:00a N&N Deadline 7:00p A Chosen Faith	25 1:30p Women's Disc - Sanct 6:30p Choir Rehearsal - Sanct	26 5:00p Sophomore Reunion	27
28 9:45a Choir Rehearsal 11:00a Worship and RE 12:30p Secret Pals Revealed - Sanctuary/CR/RE						